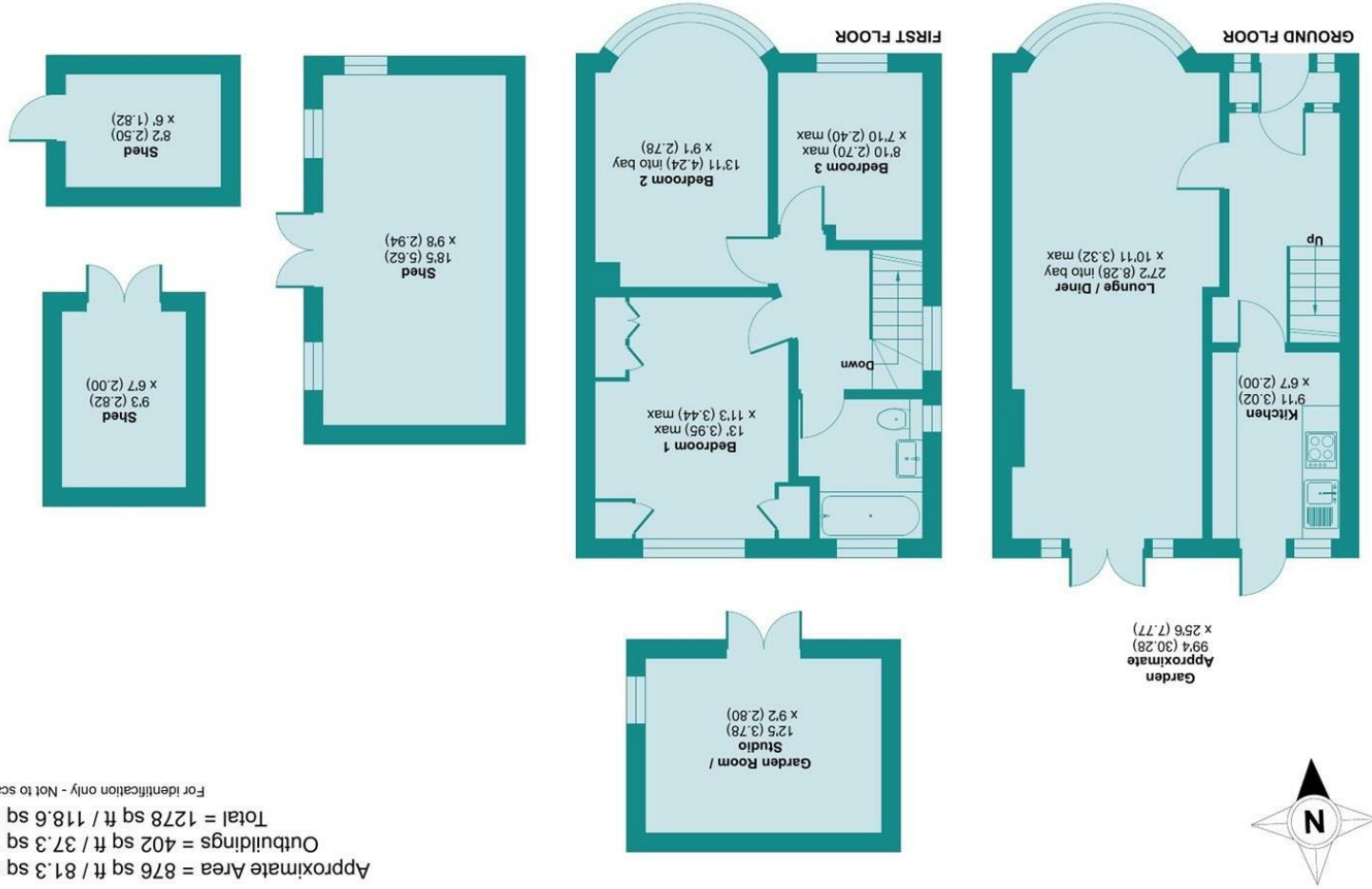


Floor plan produced in accordance with RICS Property Measurement Standards (IPMS2 Residential). © mhc.com 2026. Produced for James Estate Agents. REF: 1467627



**Hastings Way, Croxley Green, Rickmansworth, WD3**

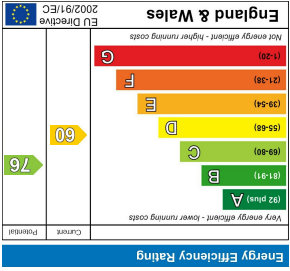
**LOCAL AUTHORITY**  
Three Rivers District Council

**TENURE**  
Freehold

**COUNCIL TAX BAND**  
D

**VIEWS**  
By prior appointment only

**Energy Efficiency Rating**



Agents Note: Whilst every care has been taken to prepare these particulars, they are for guidance purposes only. All measurements are approximate and are for general guidance purposes only and whilst every care has been taken to ensure their accuracy, they should not be relied upon and potential buyers/tenants are advised to recheck the measurements

## PROPERTY SUMMARY

Three bedroom semi-detached house located on Hastings Way, It offers approx 1278 square feet (including the garden room/cabin in the rear garden). The accommodation on the ground floor includes; a through reception room with French doors to the garden and a modern kitchen. Whilst the first floor has three bedrooms, one with fitted wardrobes and a modern family bathroom. To the front of the property is off street parking for one vehicle. The 99 foot garden has a garden room/cabin with electricity, a number of sheds, a patio and fenced and shrub borders. Croxley Green is known for its picturesque surroundings and offers a range of local amenities, parks, and excellent transport links. In summary, this house presents a wonderful opportunity for anyone looking to settle in a friendly and vibrant community. With its ample living space, parking facilities, and proximity to local amenities, it is a property not to be missed.

3



1



2

